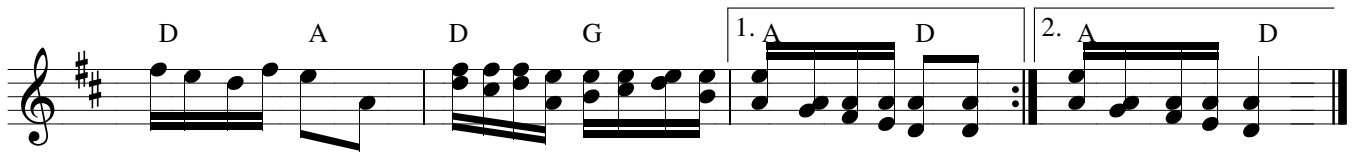
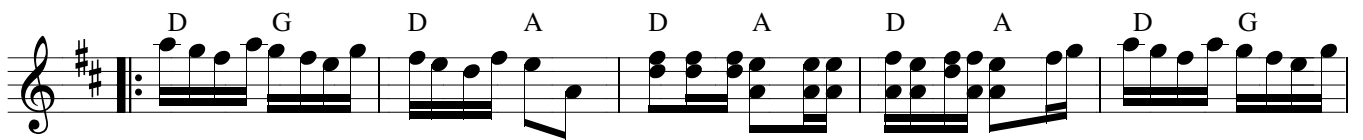


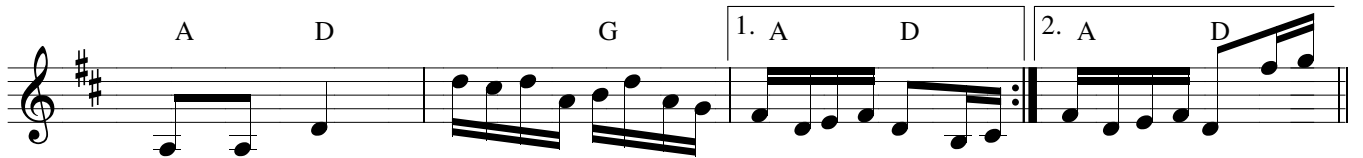
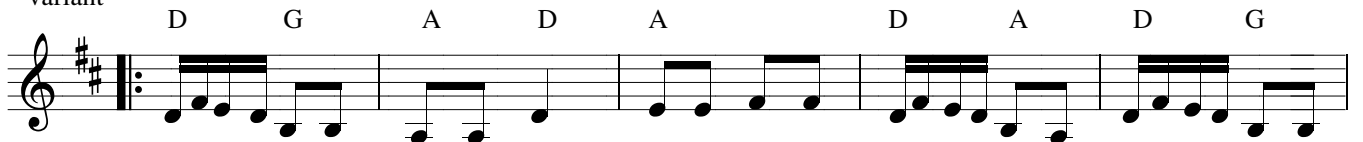
ARKANSAS TRAVELLER

fiddle

TRADITIONAL
Old-Time, Bluegrass



variant



variant

D G A D A

D G A D G 1. A D 2. A D

D G D A D G D A

D G D A D G 1. A D 2. A D

This system contains four staves of music. The first staff begins with a treble clef, a key signature of two sharps (F# and C#), and a common time signature. It features a sequence of notes and chords: D, G, A, D, A. The second staff continues with D, G, A, D, G, followed by two first endings: 1. A D and 2. A D. The third staff contains D, G, D, A, D, G, D, A. The fourth staff contains D, G, D, A, D, G, followed by two first endings: 1. A D and 2. A D. There are triplets of eighth notes in the first two staves.

variant

D G D A

D G D G 1. A D 2. A D

D G D A D A D A

D G D A D G 1. A D 2. A D

This system contains four staves of music. The first staff begins with a treble clef, a key signature of two sharps, and a common time signature. It features a sequence of notes and chords: D, G, D, A. The second staff continues with D, G, D, G, followed by two first endings: 1. A D and 2. A D. The third staff contains D, G, D, A, D, A, D, A. The fourth staff contains D, G, D, A, D, G, followed by two first endings: 1. A D and 2. A D. There are triplets of eighth notes in the first two staves.